

Product Information

Lucifer Yellow Cadaverine

Catalog Number: L4042

Product Size: 10 mg

Application Scope: Cytoplasmic tracer

Parameters

Appearance: Yellow solid soluble in water

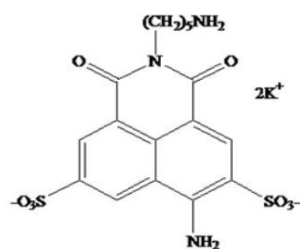
Ex/Em: 428/536 nm

CAS No.: 149733-79-9

Molecular Formula: $C_{17}H_{17}K_2N_3O_8S_2$

Molecular Weight: 534

Molecular Structure:



Storage

Store at -20°C and protect from light. When stored as directed,

product is stable for at least 12 months.

Description

Lucifer Yellow Cadaverine can label endocytic vesicles and is widely used as a fixable fluorescent tracer. Its advantages are high water solubility, bright fluorescence, low cytotoxicity, and a wide Stokes shift. In addition, the dye can be used to conjugate to carboxylic acid groups.

Notes

1. There are quenching problems with fluorescent dyes. Please avoid light to slow down the fluorescence quenching.
2. For your safety and health, please wear lab coats and disposable gloves.

