

Product Information

DL2,000 DNA Ladder

Catalog Number: DL2030

Product Size: 0.5 mL (0.07mg/mL)

Storage

Store at 4°C. When stored as directed, product is stable for at least 6 months. Store at -20°C. When stored as directed, product is stable for at least 2 years.

Description

DL2,000 DNA Ladder consists of 6 individual chromatography-purified DNA fragments. It is suitable for the analysis of DNA bands in agarose gel electrophoresis. It is not recommended for Acrylamide gel electrophoresis. This product is a ready-to-use product that already contains 1 × Loading Buffer. It can be directly loaded with electrophoresis according to the needs of the experiment. It is easy to use and the electrophoresis image is clear. The 2000bp and 750bp bands are shown as bright bands.

The product contains two dyes (cyan dye and yellow dye), which will be separated during electrophoresis to monitor the migration progress. The cyan dye has the same mobility as the 3-5kb DNA fragment in a 2% agarose gel, and the yellow dye in a 1% agarose gel migrates faster than the primers (<50bp).

Bands composition

100 bp, 250 bp, 500 bp, 750 bp, 1000 bp, 2000 bp

Features

The bands are clear and easy to judge.

Protocol

For Research Use Only

1 / 1

1. For electrophoresis with UE S2001 Super GelRed®, take 1-2 μ L (if using common nucleic acid dyes on the market, it is recommended to load 5 μ L) and add it to the agarose gel sample well. If the sample well is wide, you can increase the amount of sample to perform electrophoresis.
2. The recommended electrophoresis conditions are 2% agarose gel with a voltage of 4-10V / cm.
3. Stain with Super GelRed® or other dyes and observe the electrophoretic bands.

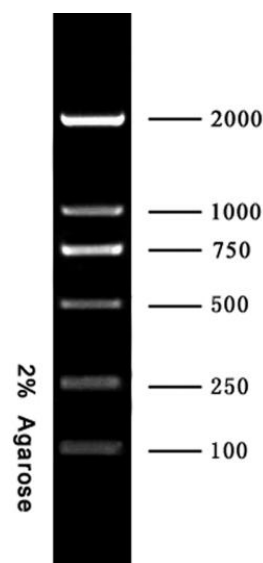
Recommended running buffer

TBE

Notes

1. Thaw thoroughly before use.
2. Please change the running buffer in time and use a new gel to avoid affecting the electrophoresis results.

DL2,000 DNA Ladder



US EVERBRIGHT INC.

Tel:0512-88965152

Web:www.useverbright.com/