

Product Information

CPM [7-Diethylamino-3-(4'-Maleimidylphenyl)-4-Methylcoumarin]

Catalog Number: C5005

Product Size: 5 mg

Application Scope: Thiol reactive dye

Parameters

Appearance: Yellow solid soluble in DMSO

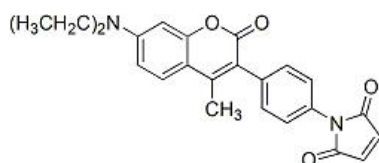
Ex/Em: 384/470 nm (MeOH)

CAS NO.: 76877-33-3

Molecular Formula: C₂₄H₂₂N₂O₄

Molecular Weight: 402.45

Molecular Structure:



Storage

Store at -20°C and protect from light. When stored as directed, product is stable for at least 12 months.

Description

CPM is a widely used blue fluorescent thiol-reactive dye that is essentially nonfluorescent until it reacts with thiols, making it possible to quantify thiols without a separation step. CPM is a good energy acceptor from tryptophan and a good energy donor to fluorescein.

Notes

1. There are quenching problems with fluorescent dyes. Please avoid light to slow down the fluorescence quenching.
2. For your safety and health, please wear lab coats and disposable gloves.

